

Tuesday, November 12, 2019

- Complete warm-up.
- Open sketchbook to next clean page, and label it SB6 with today's date.

Warm-up: Answer in 2-3 complete sentences.

Define FOCAL POINT.

Is there one in this painting? If so, what is it? If not, why not?

Gustav Klimt, The Tree of Life,
1909



Today, we will:

Work on Drawing from Life (SB6)

SB6: Refraction drawing due 11/14 or 15

Draw an object seen through glass (how does the glass make a difference?).

NOTE: We will do this one in class.



Wed., November 13, 2019

- Complete warm-up.
- Open sketchbook to Q2 Notes page.

Martin Eichinger, Off-Kilter, 2012
Catrin Welz-Stein, Moonwalk



Warm-up: Answer in 2-3 complete sentences.
What is the main difference between paintings on canvas and sculpture?



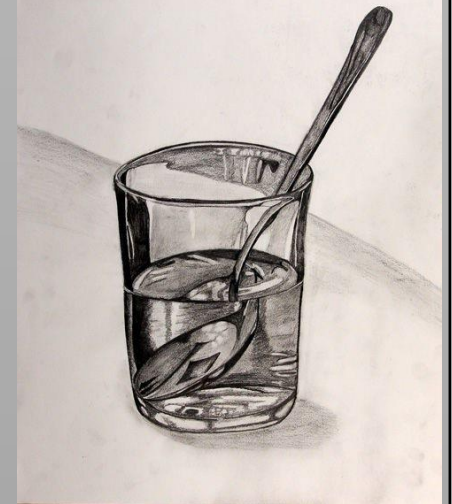
Today, we will:

- 1, 5: Introduce/Begin Architectural Letter Project
- 2, 4, 6: Introduce Mixed Media Project

SB6: Refraction drawing

Draw an object seen through glass (how does the glass make a difference?).

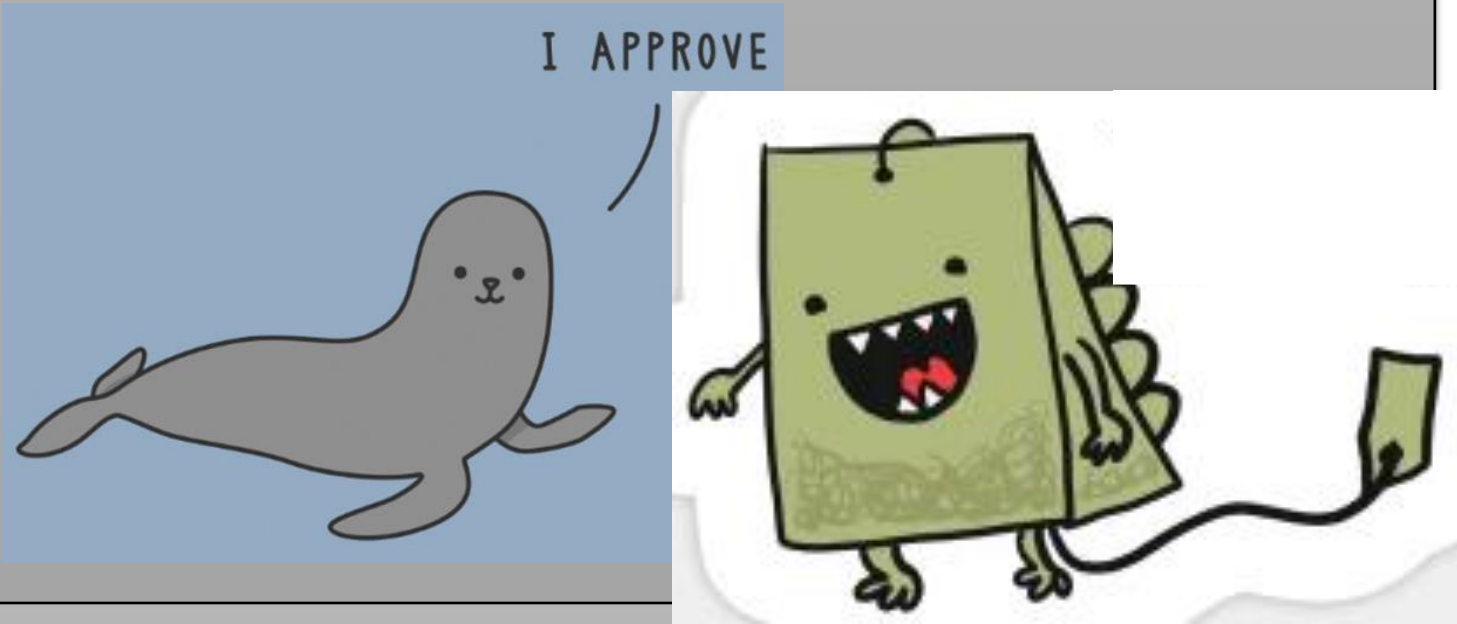
NOTE: We will do this one in class.



Thur., November 14, 2019

➤ Wait for instruction.

Can you solve these visual puns?

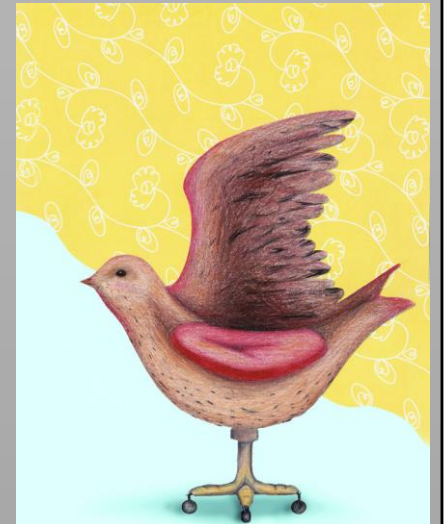


Today, we will:

- Work on Architectural Letter

SB7: Crosslinks due 11/20 or 21

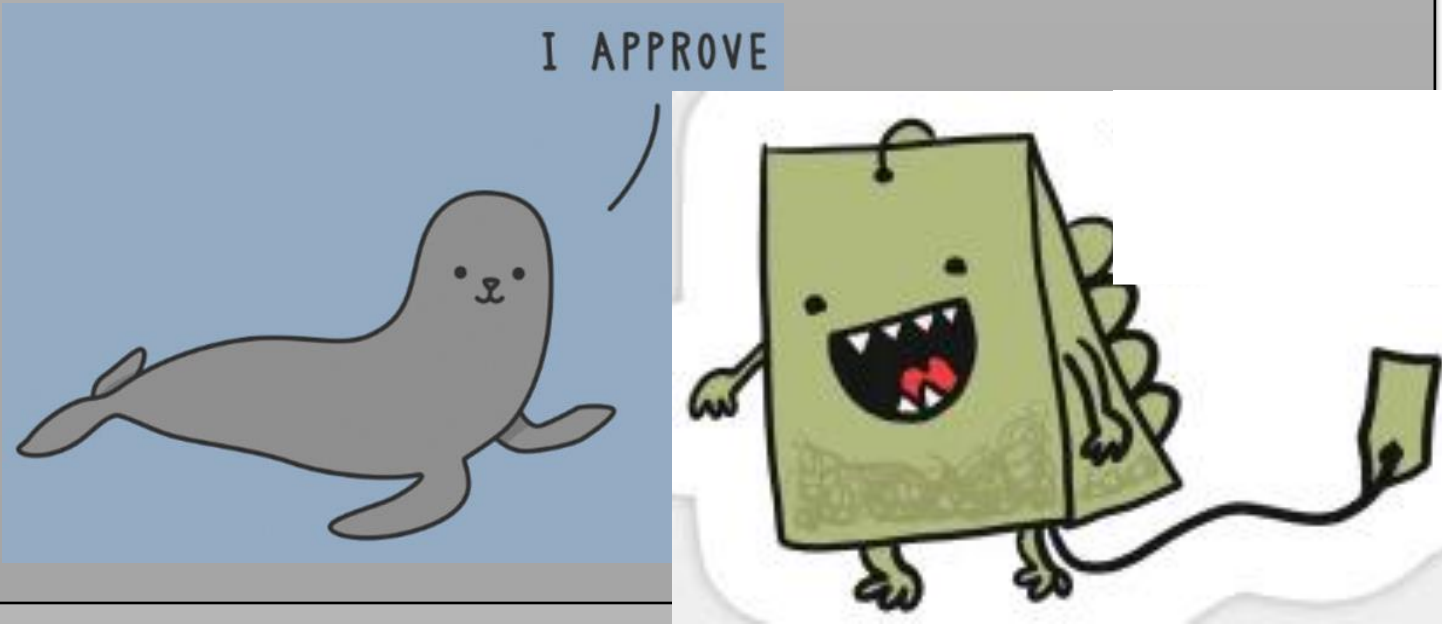
1. Combine 2 unrelated objects
2. Use color



Fri., November 15, 2019

➤ Wait for instruction.

Can you solve these visual puns?



Today, we will:

- Create Slab Loom

SB7: Crosslinks due 11/20 or 21

1. Combine 2 unrelated objects
2. Use color

